

INTERIOR DESIGN YEARBOOK 2015



WRITERS INCLUDE:

ANNA-GRACE DAVIDTSON

CHRISTOPHER JENNER

NATALIA MIYAR

SALLY STOREY

EDITED BY **JADE TILLEY**

UK CONSUMER EDITION £8.95



Published in association with the British Institute of Interior Design





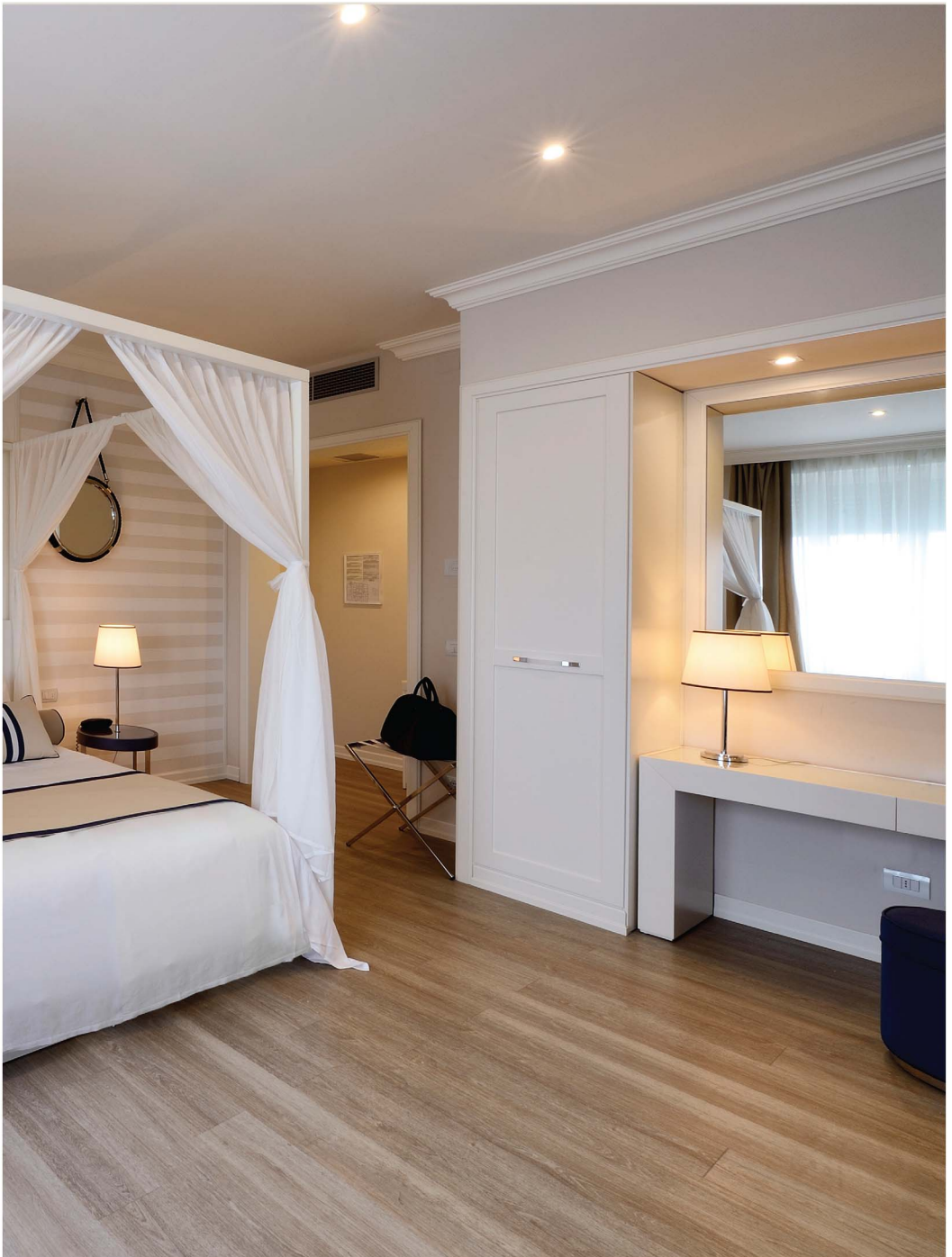
BEACHSIDE BLISS

Simone Speciale Luchinat redesigned the 28 standard rooms and suites in this beachside hotel in Camaiore, Tuscany, where Mussolini once stayed, in a timeless classic contemporary style, with a nod to its location, using striped wallpaper, rope mirrors, sailing artwork and high gloss yacht-like furniture. All the rooms have been redesigned in either olive green or royal blue tones that compliment the cream wardrobes, walls and furniture for a classic timeless design and feel.



The Grand Hotel & SPA, Camaiore, Tuscany, Italy, was designed by Simone Speciale Luchinat of S&L Associati, Florence, Italy and completed in July 2014, with further works carried out in the restaurant and bar in October 2014.







UNEXPECTED CHALET

To see the Gstaad chalet is to witness a melding of contemporary design and traditional chalet architecture. Luchinat worked by removing unnecessary features from the design, really paring it back to basics before building up the features by playing with materials and details, preferring subtle allusions through colours typical of the scenic mountains outside. Though the chalet is modern in design, Simone Speciale Luchinat has given a nod to the traditional chalet culture by using wood throughout the design, with a few twists to keep the feel contemporary. Whereas generally darker wood is used on the exterior and lighter within, the architect has reversed this, using dark wood on the interior where it is complimented by large windows to flood the room with the crisp mountain light. The design of the building itself was conceived by Chaletbau Matti, who wanted to create a chalet of unexpected elegance. Luchinat has continued this feeling of the unexpected by the abundance of shape and colour in the interior design. In the context of chalets, where excess decoration is the norm, this choice creates an unusual precedence, one that is looking likely to become increasingly popular in time.



Gstaad Chalet, Gstaad Switzerland was designed by Simone Speciale Luchinat and completed in January 2013.



